
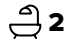
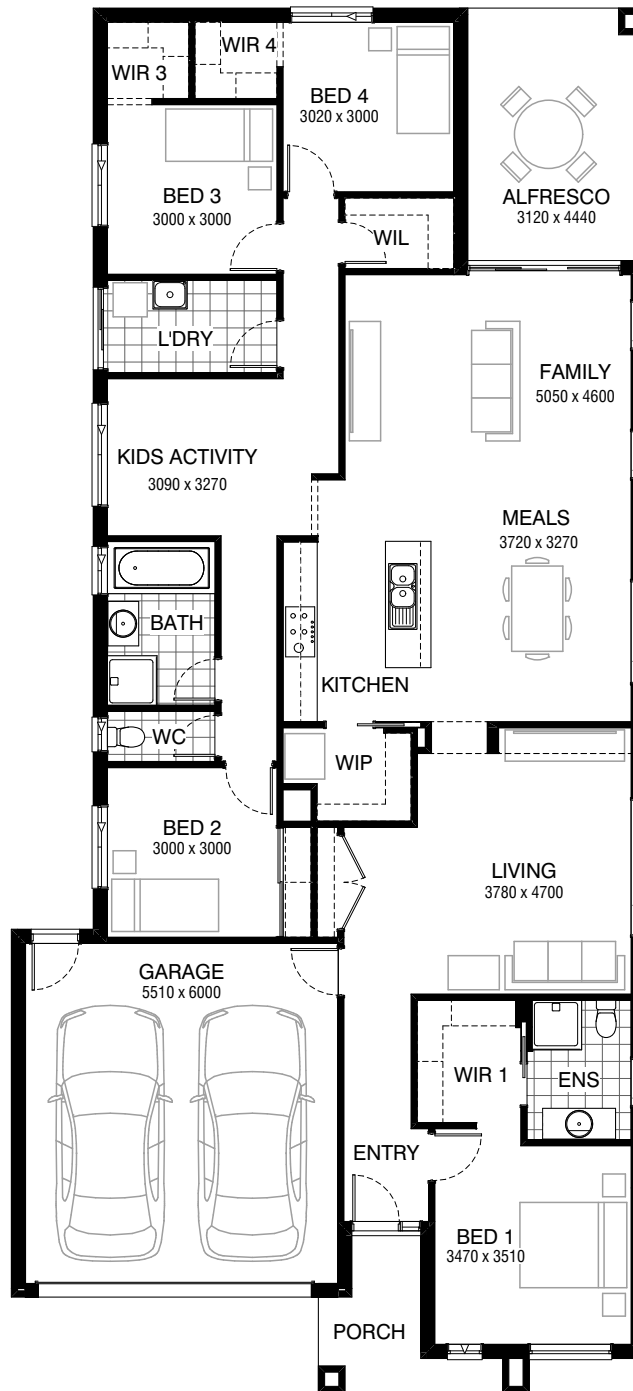


Total squares **25.6sq**

 **4**  **2**  **2**



**Facades available:**

Drysdale, Arkley, Dowd, Haring	
Nolan, Alpine, Woodland, Felix	
Coburn, Collins	
<b>Overall home width</b>	<b>11.15m</b>
<b>Overall home length</b>	<b>24.35m</b>

Residence	182.1m <sup>2</sup>	19.6sq
Garage	36.4m <sup>2</sup>	3.9sq
Porch	5.5m <sup>2</sup>	0.6sq
Alfresco	13.9m <sup>2</sup>	1.5sq
<b>Total</b>	<b>237.8m<sup>2</sup></b>	<b>25.6sq</b>

**FLOORPLAN OPTIONS**




All available ready-to-go floorplan options for this design can be viewed on the following pages, or visit [www.burbank.com.au](http://www.burbank.com.au).

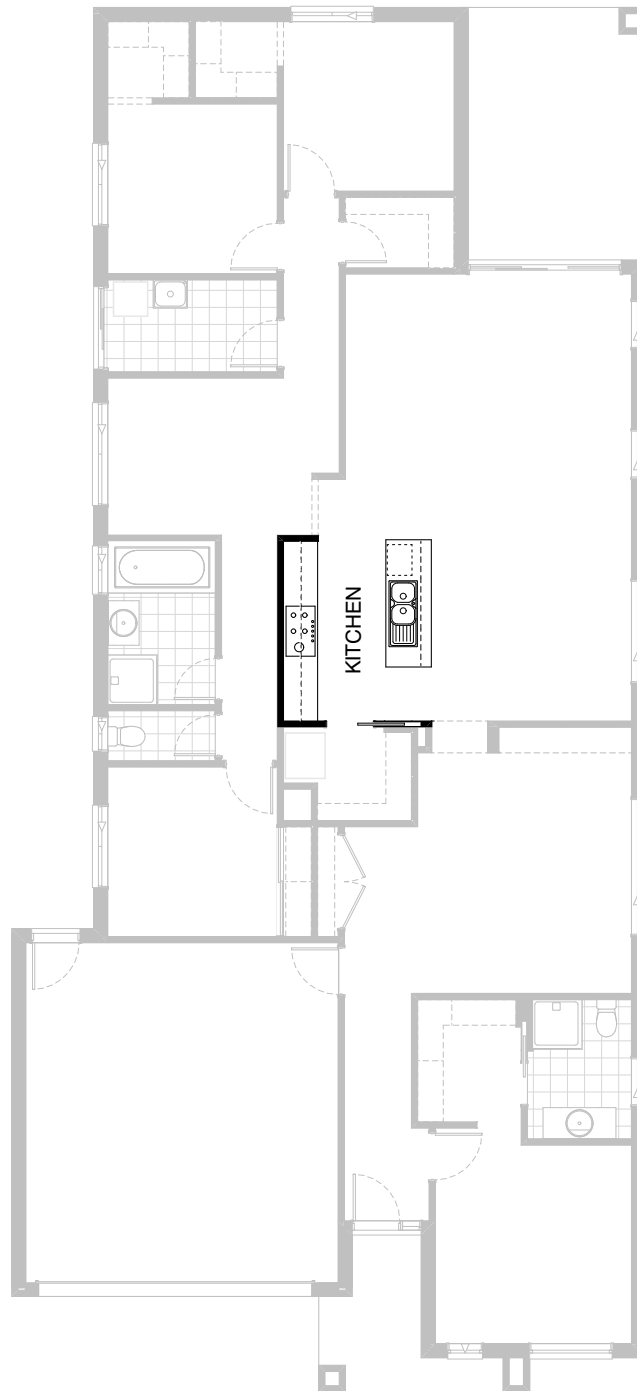
Listed details based on Drysdale façade floorplan (illustrated)

\*Copyright conditions. All photos and illustrations are representative only. Floor plans and specifications may be varied by Burbank without notice, the dimensions are diagrammatic only and a Building Contract with final drawings will display correct dimensions and detail. All designs are the property of Burbank and must not be used, reproduced, copied or varied, wholly or in part without written permission from an authorised Burbank representative. Copyright Burbank Australia Pty Ltd. ABN 91 007 099 872. Builders Registration Number CDB-U-52603.

**Call 13 BURBANK**  
**Visit [burbank.com.au](http://burbank.com.au)**

**FLOORPLAN OPTIONS**




 **4**    **2**    **2**

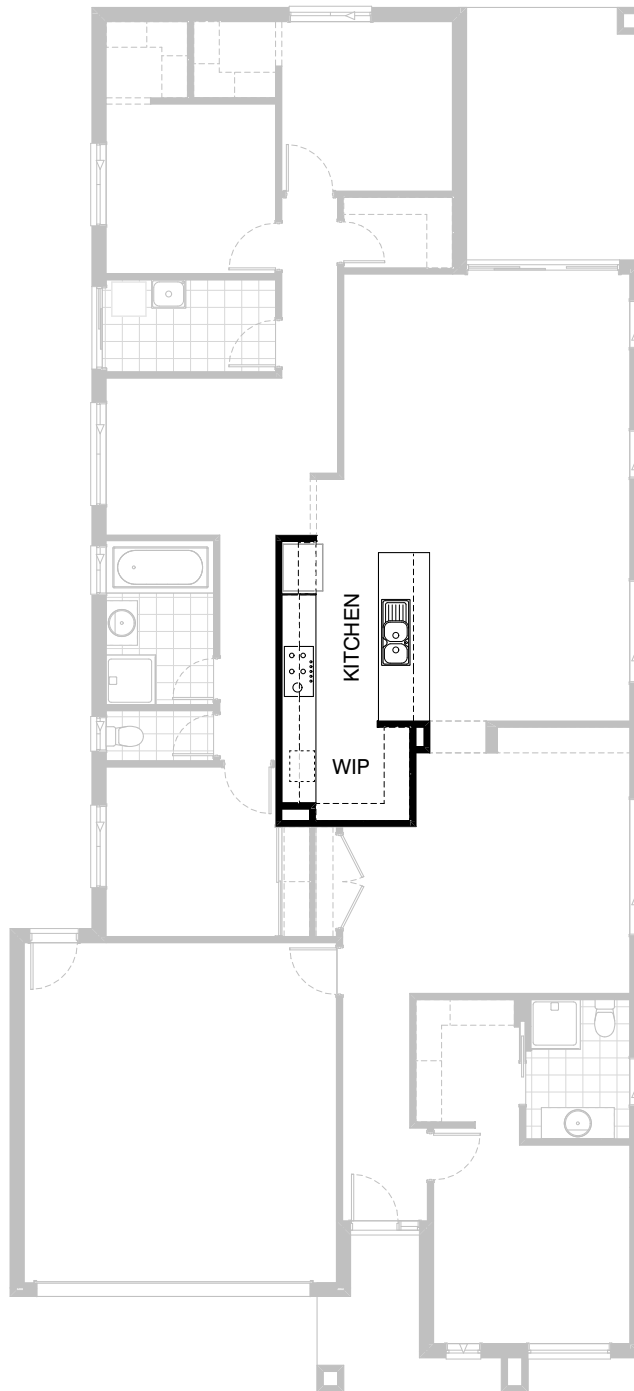


**Option K-1**

Provide Kitchen upgrade with 1no. laminated MW. provision and 1no. 900mm base cabinet in lieu of standard 2no. 350mmmm base cabinets and 1no. 800mm base cabinet.

**FLOORPLAN OPTIONS**

 **4**    **2**    **2**






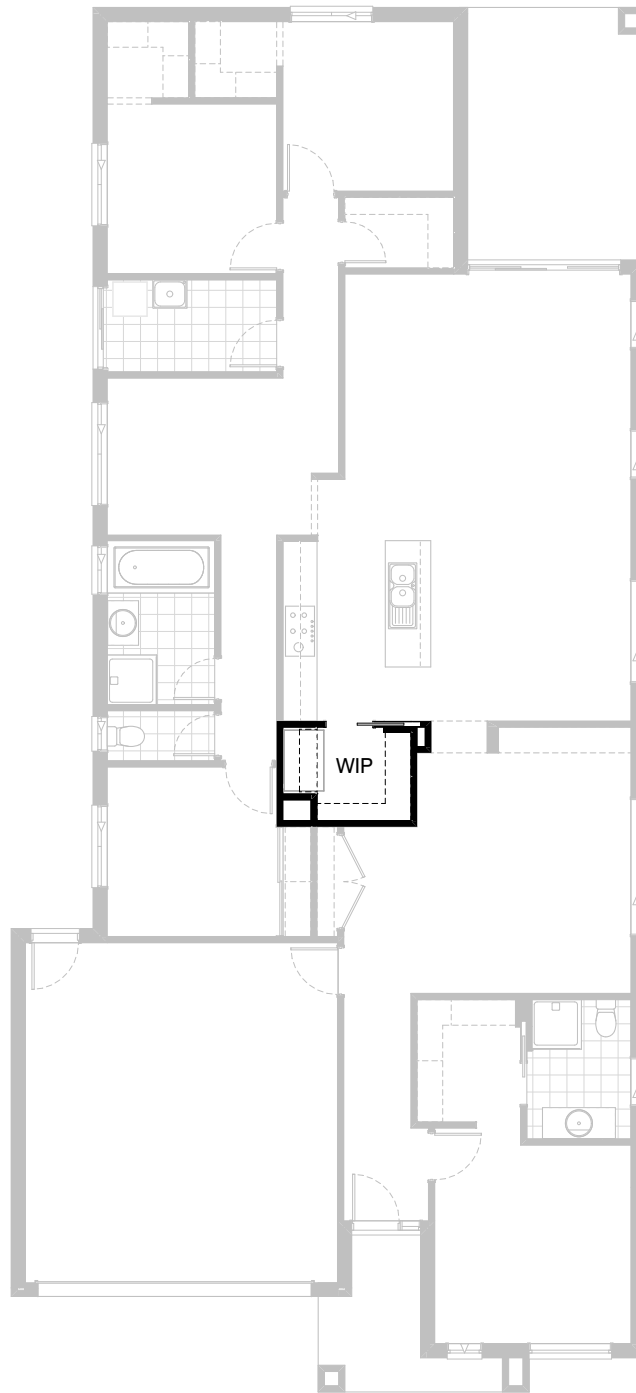
**Option K-2**

Provide Kitchen upgrade including removing wall between Kitchen and W.I.P and cavity sliding door. Relocate island bench against W.I.P wall and provide 2no. 900mm cabinets, 1no. 610mm DW. provision and 1no. 450mm drawers in lieu of standard. Reduce void in W.I.P and relocate refrigerator space to other end of Kitchen bench. Extend Kitchen bench to include 2no. 900mm base cabinets and 632mm MW. provision. Provide 3no. 900mm overhead cabinet and open shelf above refrigerator space.

\*Copyright conditions. All photos and illustrations are representative only. Floor plans and specifications may be varied by Burbank without notice, the dimensions are diagrammatic only and a Building Contract with final drawings will display correct dimensions and detail. All designs are the property of Burbank and must not be used, reproduced, copied or varied, wholly or in part without written permission from an authorised Burbank representative. Copyright Burbank Australia Pty Ltd. ABN 91 007 099 872. Builders Registration Number CDB-U-52603.

**FLOORPLAN OPTIONS**




 **4**    **2**    **2**

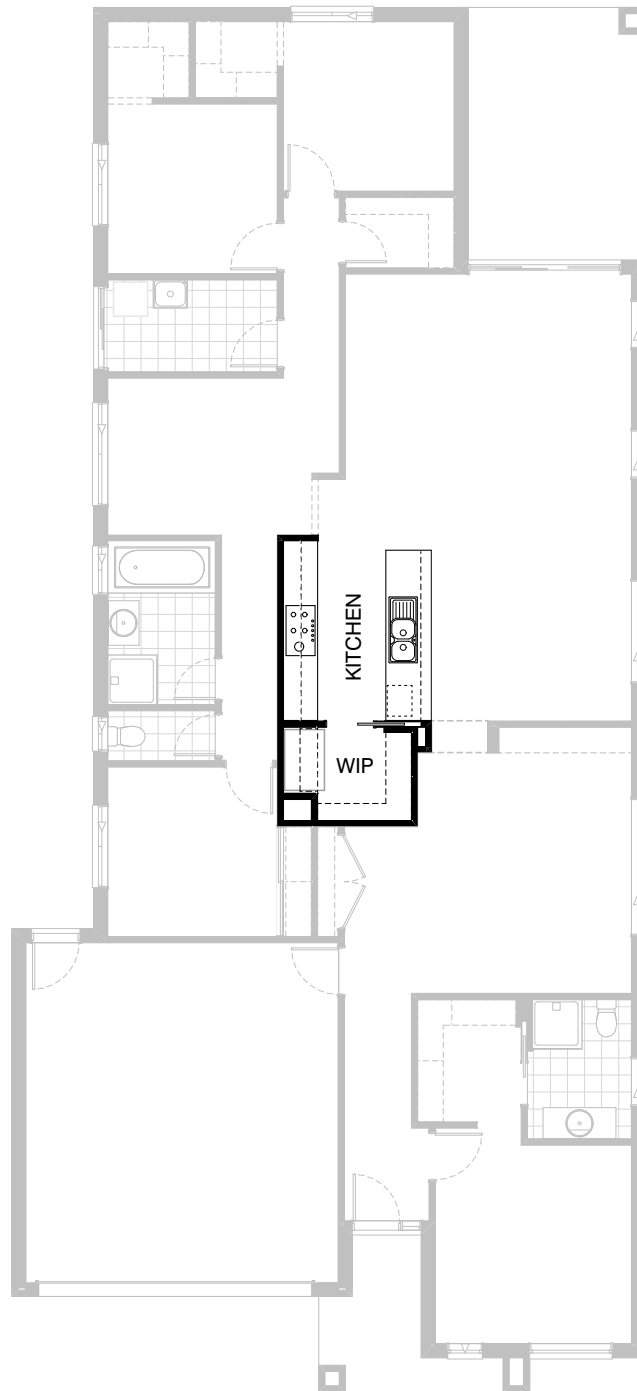


**Option K-3**

Provide Kitchen Upgrade with laminated  
open shelf to above refrigerator space

**FLOORPLAN OPTIONS**

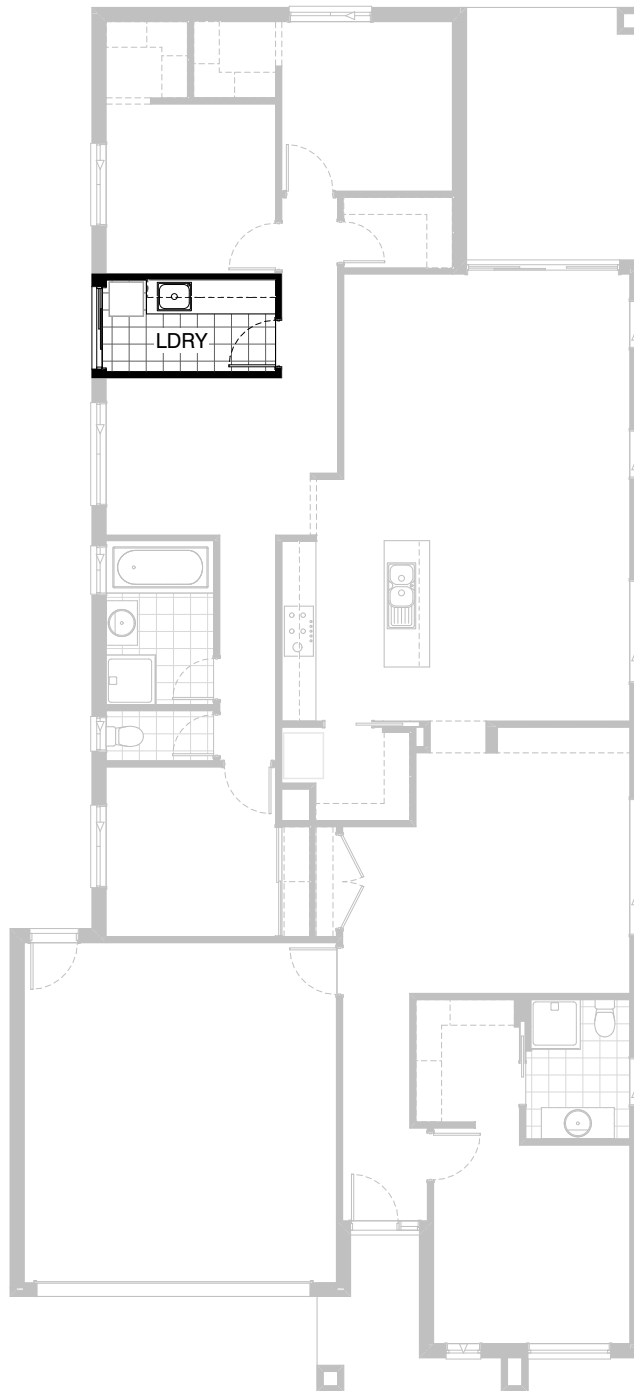
 **4**    **2**    **2**



**Option K-4**

Provide Kitchen upgrade with 1no. laminated MW. provision with pot drawer below, 1no. 900mm base cupboard, 3no. 300mm base cabinets, DW. provision, 1no. 450mm four drawer bank, 2no. 800mm base cabinets, 2no. 300mm overhead cabinets, 2no. 800mm overhead cabinets, 900mm retractable rangehood in overhead cabinet, 900mm cooktop and 900mm underbench oven. Provide 1100mm open shelf above fridge space and additional bench top and tiled splashback to suit.

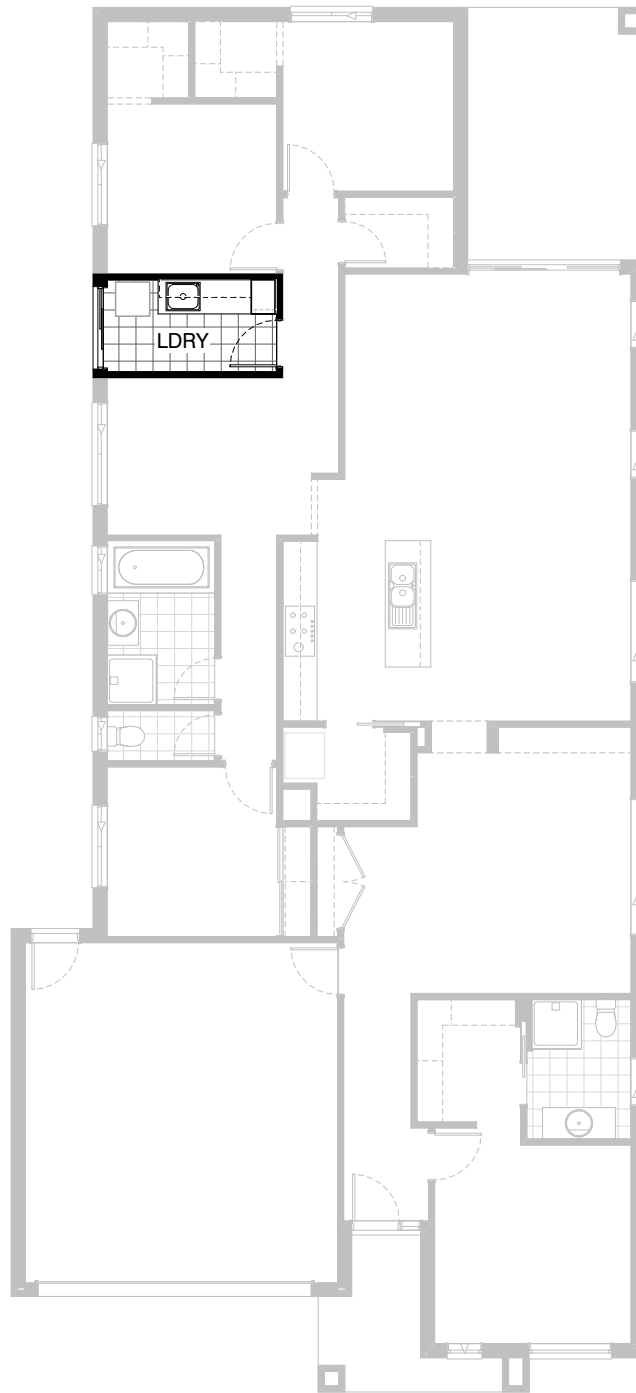
**FLOORPLAN OPTIONS**



**Option LD-1**

Provide Laundry upgrade with laminated inset trough,  
2no. 900mm base cabinets, 1no. 400mm base cabinet,  
2no. 900mm overhead cabinets, 1no. 400mm overhead  
cabinet and additional tiled splashback and bench top to suit.

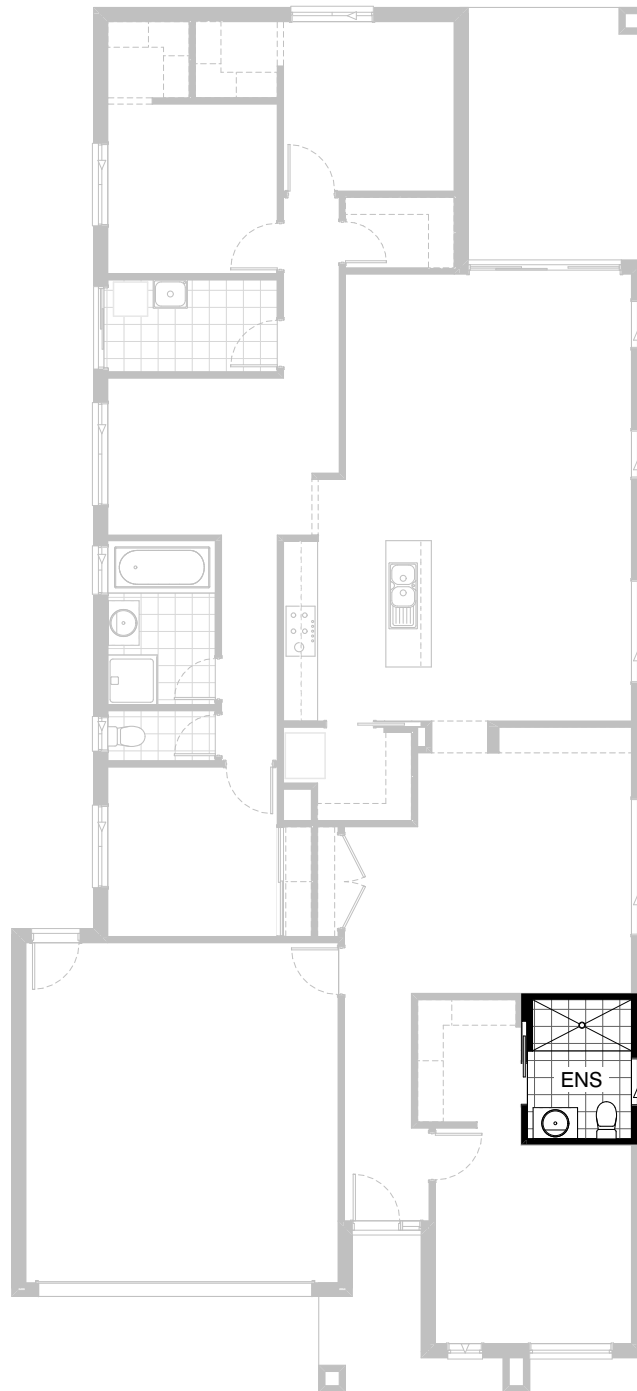
**FLOORPLAN OPTIONS**



**Option LD-2**

Provide Laundry Upgrade to include 400mm broom cabinet, 2no. 800mm base cabinets and 2no. 800mm overhead cabinets.

**FLOORPLAN OPTIONS**



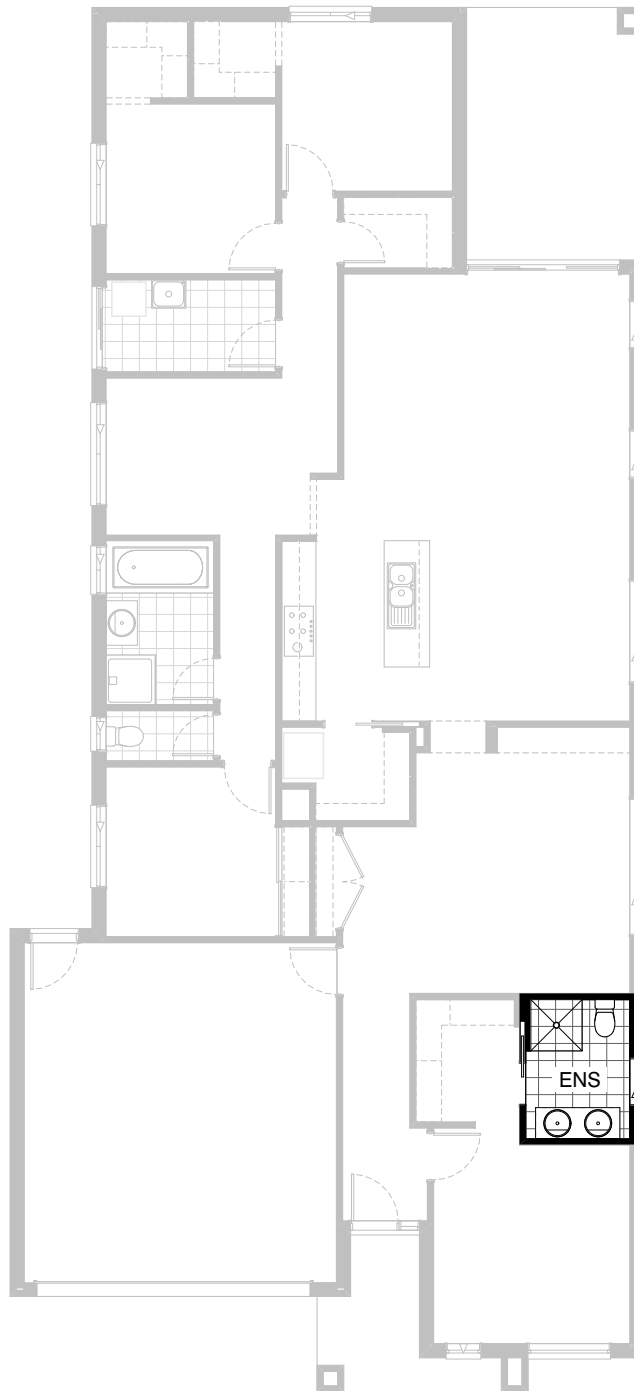
**Option ENS-1**

Provide Ensuite Option with wall to wall tiled shower base in lieu of 1no. 900mm x 900mm polymarble shower base and 1no. 782mm vanity unit in lieu of standard 1no. 1282mm wide vanity unit.



**FLOORPLAN OPTIONS**

 **4**    **2**    **2**

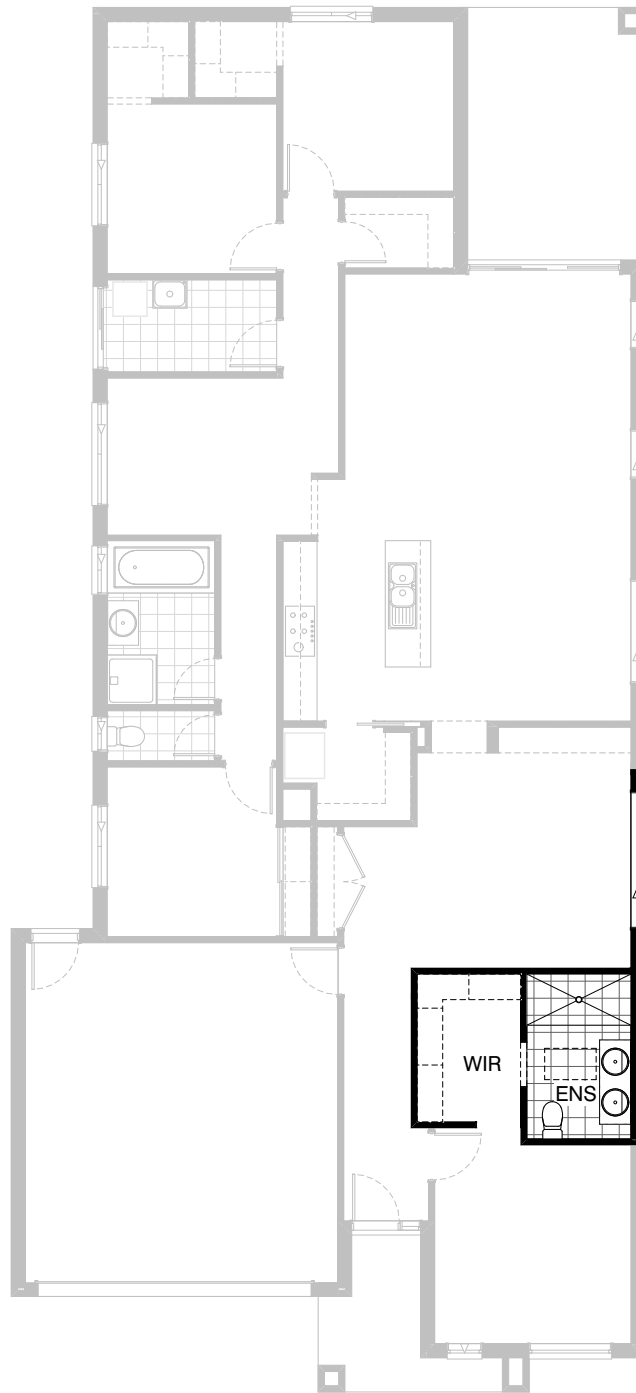


**Option ENS-2**

Provide Ensuite Upgrade by providing 900mm x 900mm tiled shower in lieu of standard. Provide 1482 vanity with double basins.

**FLOORPLAN OPTIONS**




 **4**    **2**    **2**

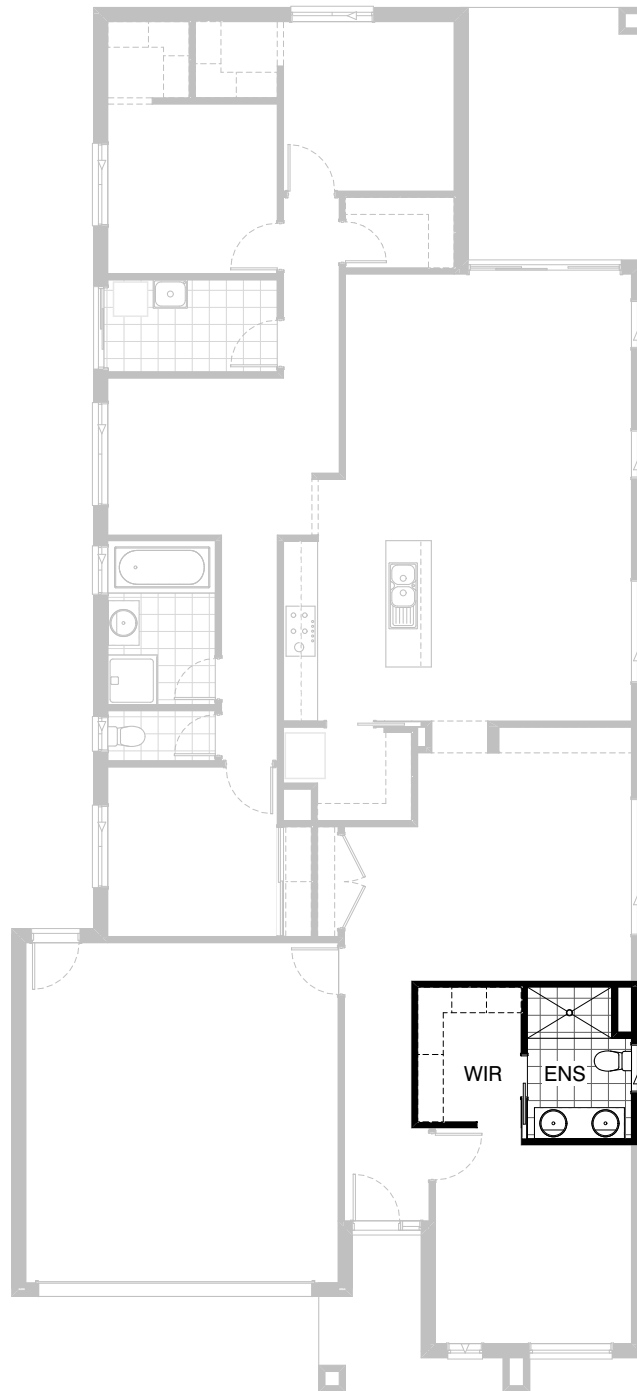


**Option ENS-3**

Provide Ensuite upgrade to include wall to wall tiled shower in lieu of standard. Delete nib stud wall in Ensuite. Provide 1482 vanity with double basins and reduce Living by 450mm to make ensuite & W.I.R larger. Delete window in Ensuite and provide Velux skylight 550mm x 980mm. Relocate Living room window 120mm towards rear of house.

**FLOORPLAN OPTIONS**

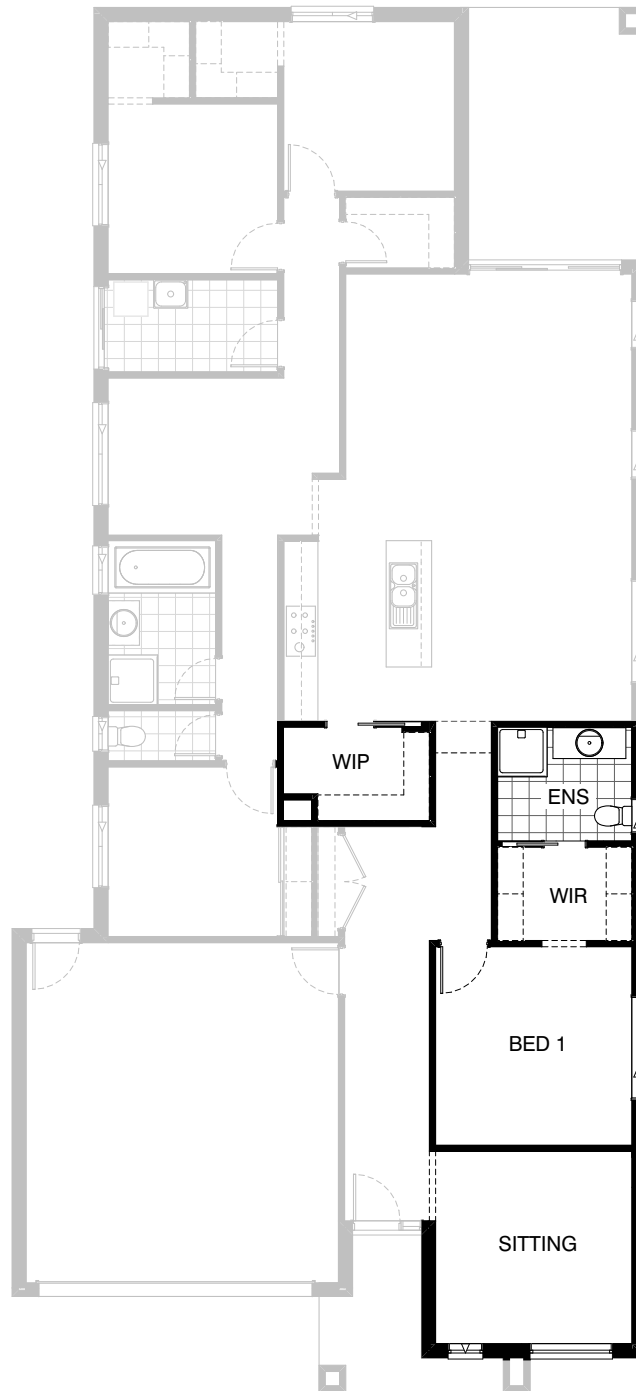
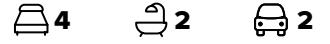
 **4**    **2**    **2**



**Option ENS-4**

Provide Ensuite Option with 1no. 1500mm x 900mm tiled shower base in lieu of standard, 1no. 1582mm wide vanity unit with 2no. basins and drawer unit.  
1no. 1027mm x 850mm aluminium sliding window in lieu of standard. Increase Ensuite and W.I.R length by 220mm and reduce Living accordingly.




FLOORPLAN OPTIONS

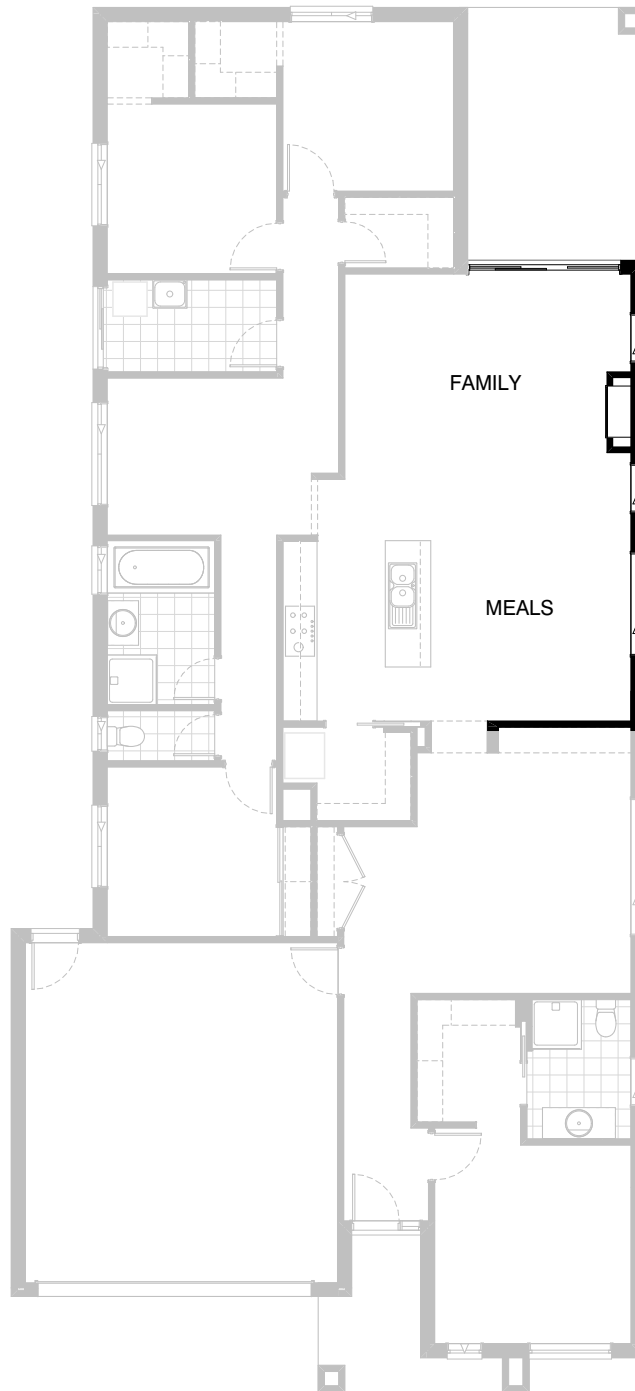


**Option IP1-1**

Provide Sitting area and relocate Bedroom 1, W.I.R and Ensuite in lieu of Living, delete 1no. 1800mm x 850mm sliding window to Ensuite and provide 1no. 1027mm x 610mm aluminium sliding window. Add 1no. 1800mm x 1810mm sliding window to Bed 1 and extend W.I.P width by 310mm to suit.

**FLOORPLAN OPTIONS**

 **4**     **2**     **2**



**Option IP1-2**

Provide Real Flame Inspire 900 gas fireplace, 400mm off floor level in a 1400mm x 420mm boxed out plaster wall with a 4 sided black fascia to Family room side wall including additional 2no. 1800mm x 850 aluminium sliding windows in lieu of standard 1no. 514mm x 1810mm aluminium sliding window.

**FLOORPLAN OPTIONS**



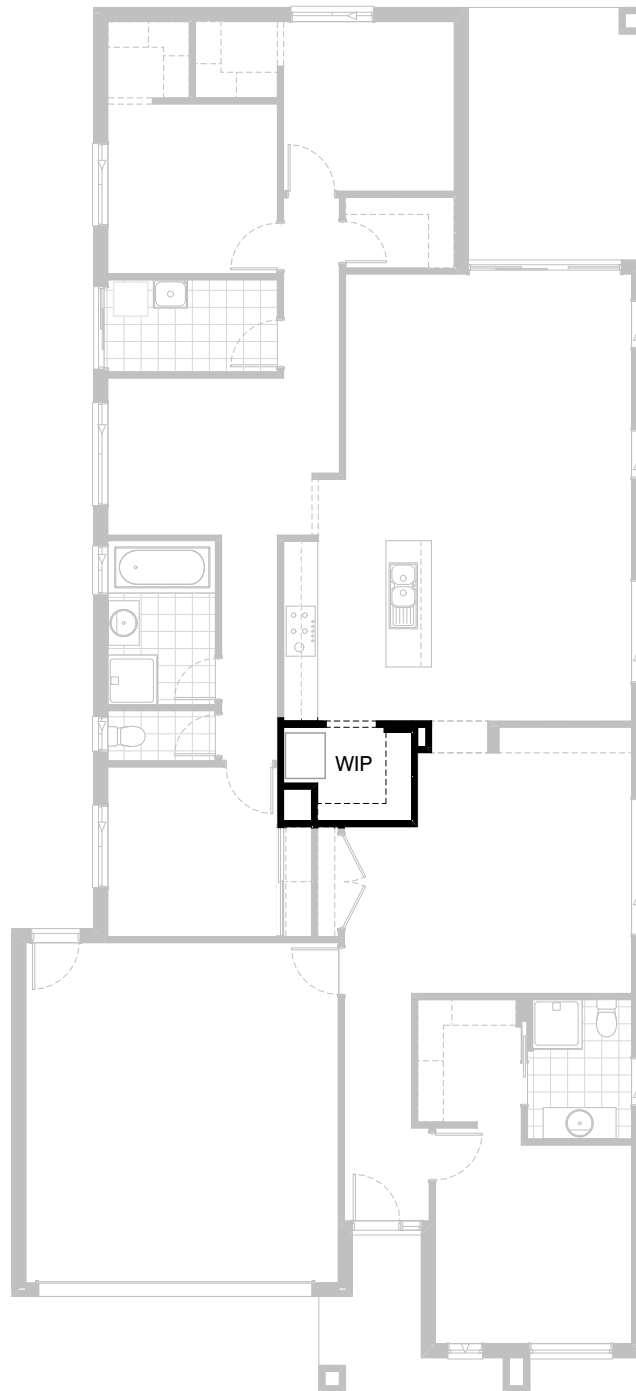
**4**



**2**






**2**

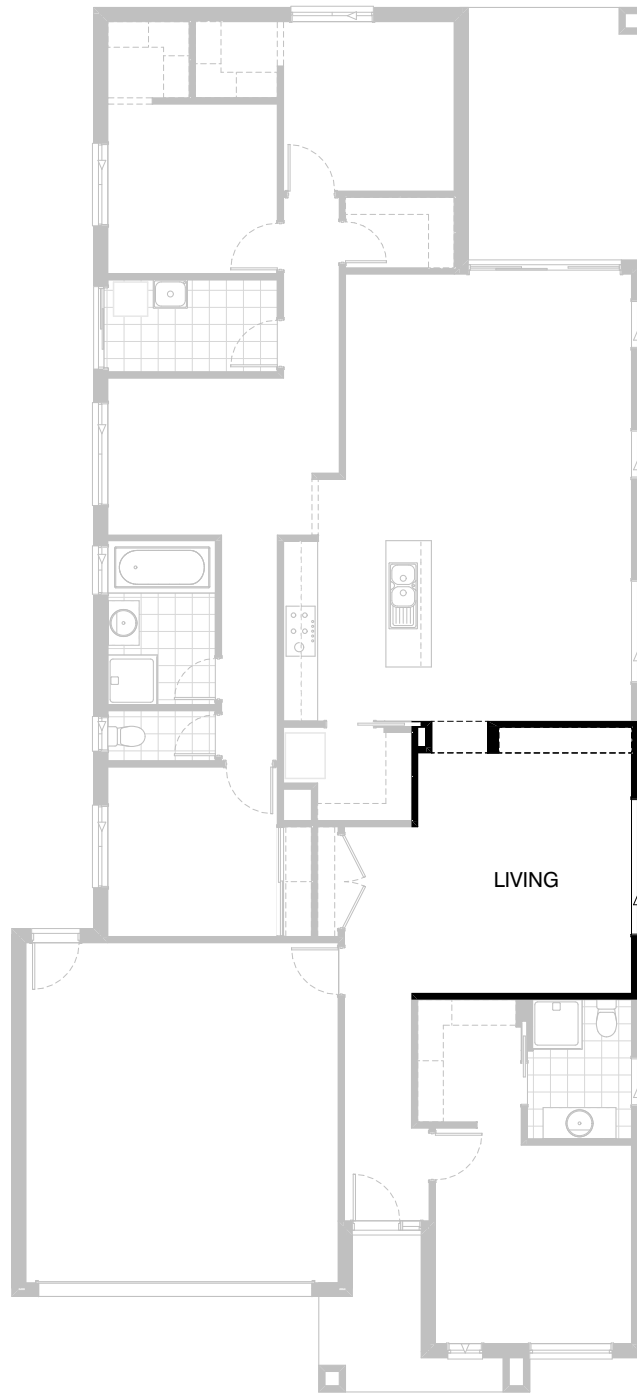


**Option IP1-3**

Provide plaster bulkhead 900mm wide opening to W.I.P. in lieu of standard cavity sliding door.

**FLOORPLAN OPTIONS**




 **4**     **2**     **2**

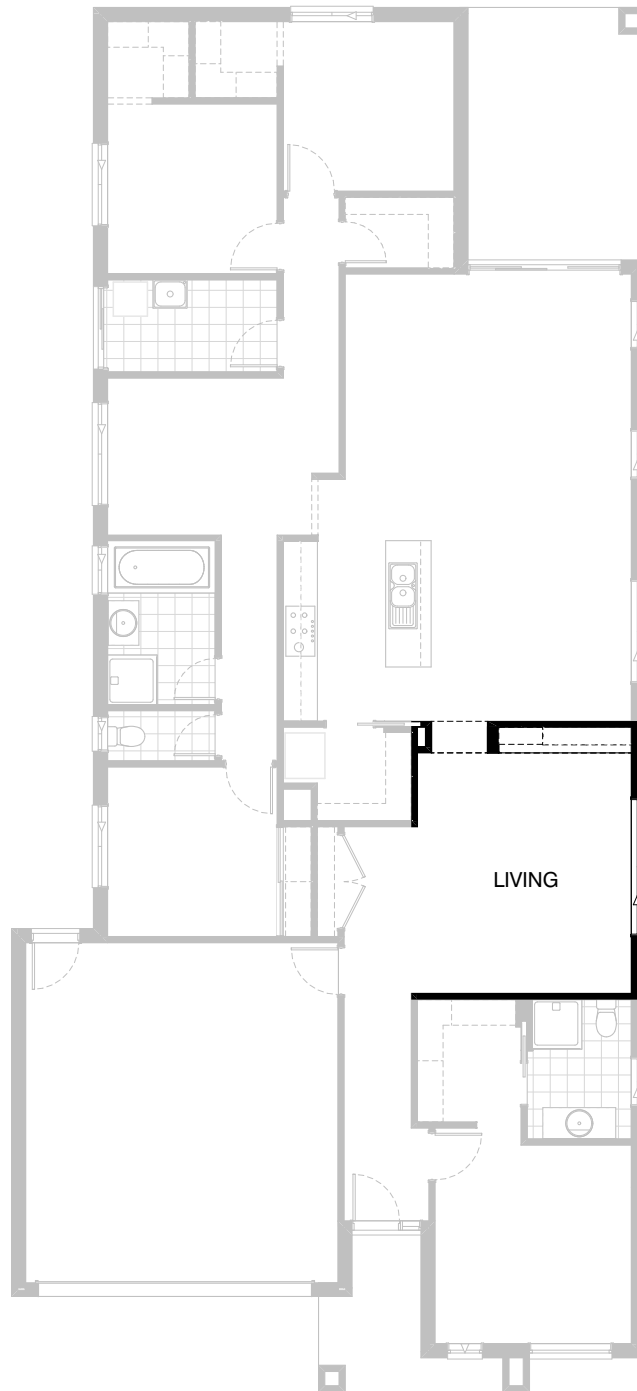


**Option IP1-4**

Provide 4no. 450mm wide x 32mm thick laminated shelves to Living alcove.

**FLOORPLAN OPTIONS**

 **4**     **2**     **2**

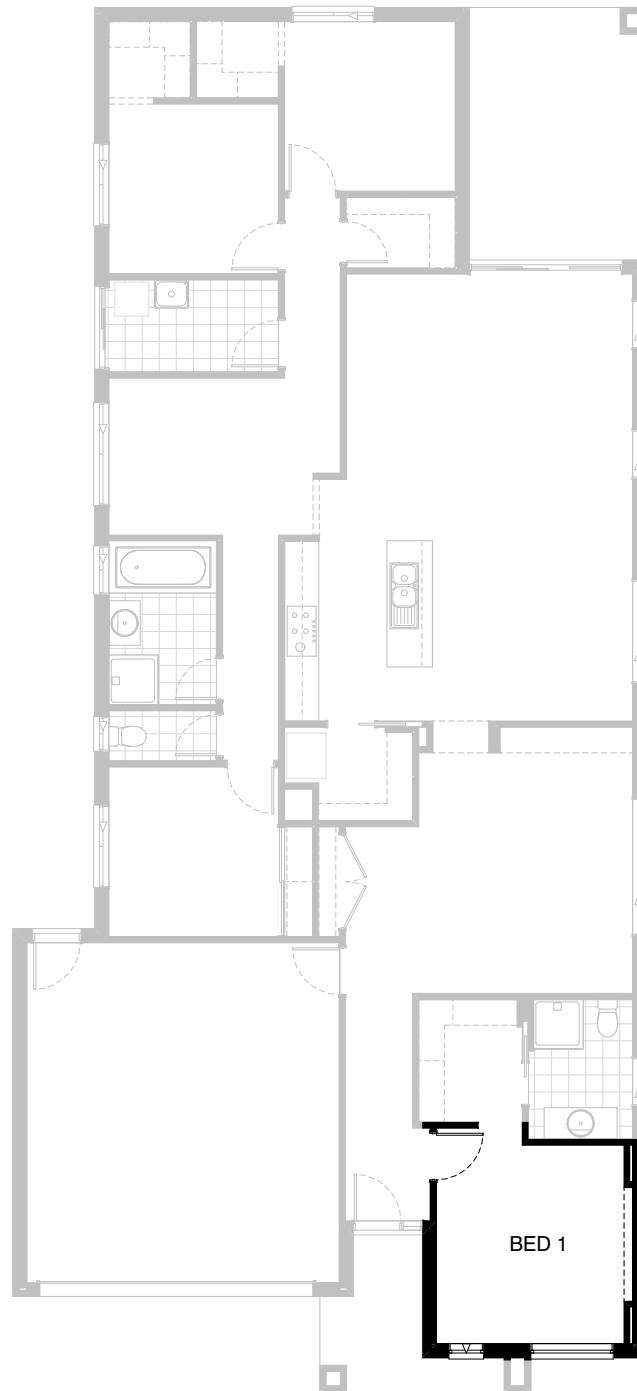


**Option IP1-5**

Provide cabinet and shelving unit,  
3no. 750mm wide base cabinets,  
2no. 750mm wide overhead cabinets.  
2no. open laminated shelves and  
32mm thick laminated bench top.



**FLOORPLAN OPTIONS**



**Option IP1-6**

Provide 150mm plaster feature wall protrusion with a 500mm deep plastered bulkhead.

**FLOORPLAN OPTIONS**



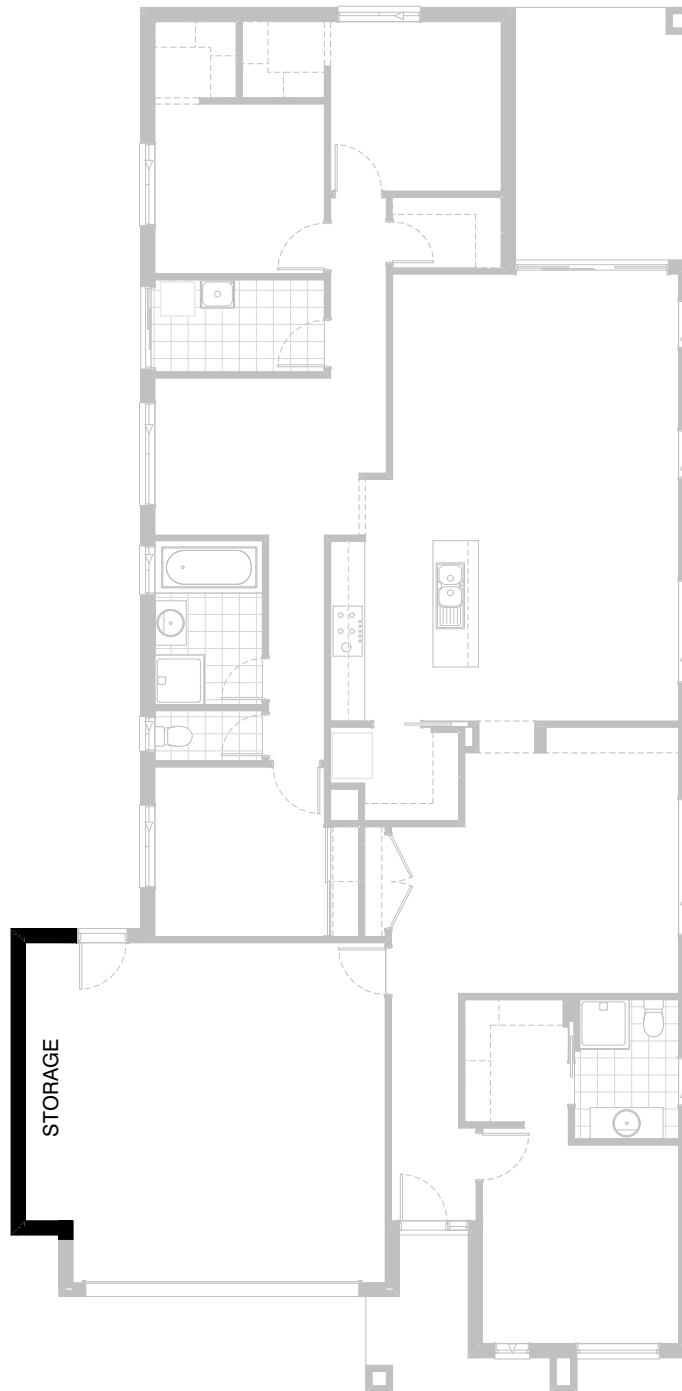
**4**



**2**



**2**



**Option G-1**

Provide extension to Garage to  
create additional Storage area.  
Increases area by 4.58m<sup>2</sup>.  
Increases width by 850mm.

**FLOORPLAN OPTIONS**



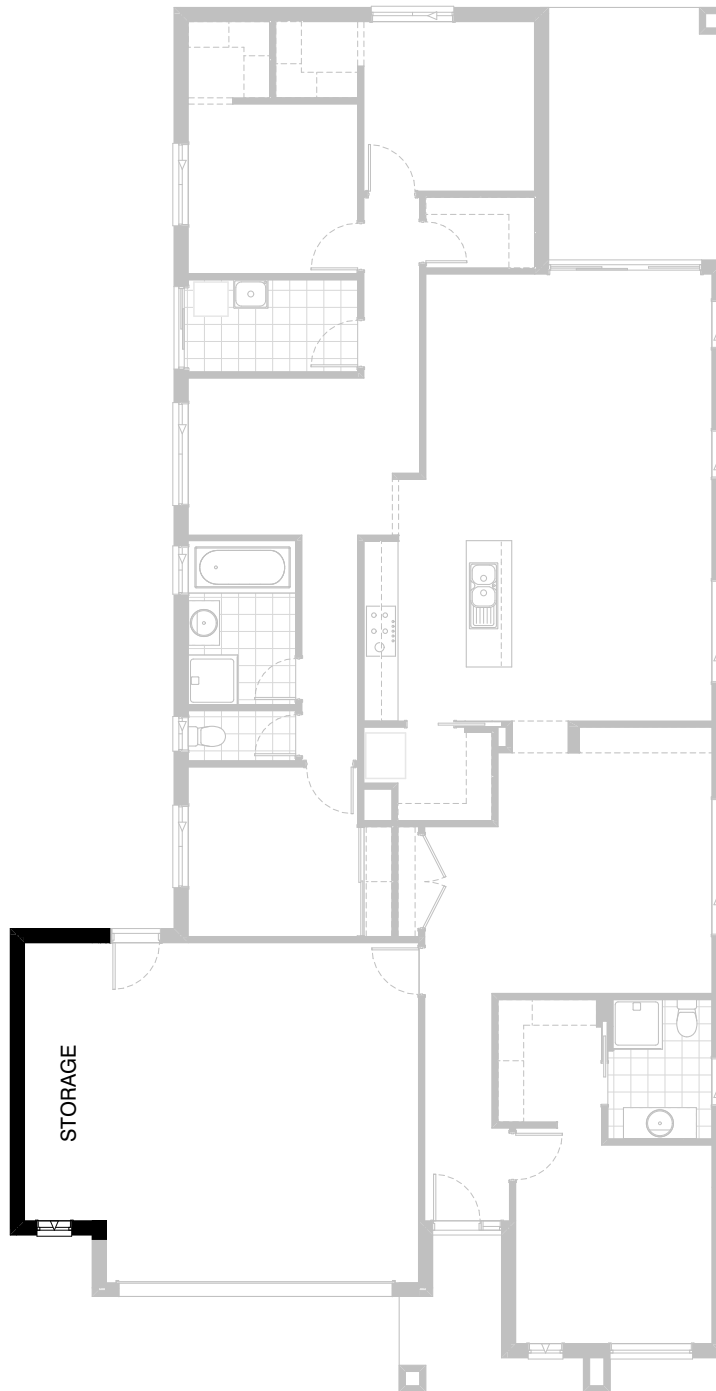
**4**



**2**



**2**



**Option G-2**

Provide extension to Garage to create  
Storage area including additional  
2057mm x 610mm aluminium awing window.  
Increases area by 7.76m<sup>2</sup>.  
Increases width by 1440mm.

**FLOORPLAN OPTIONS**



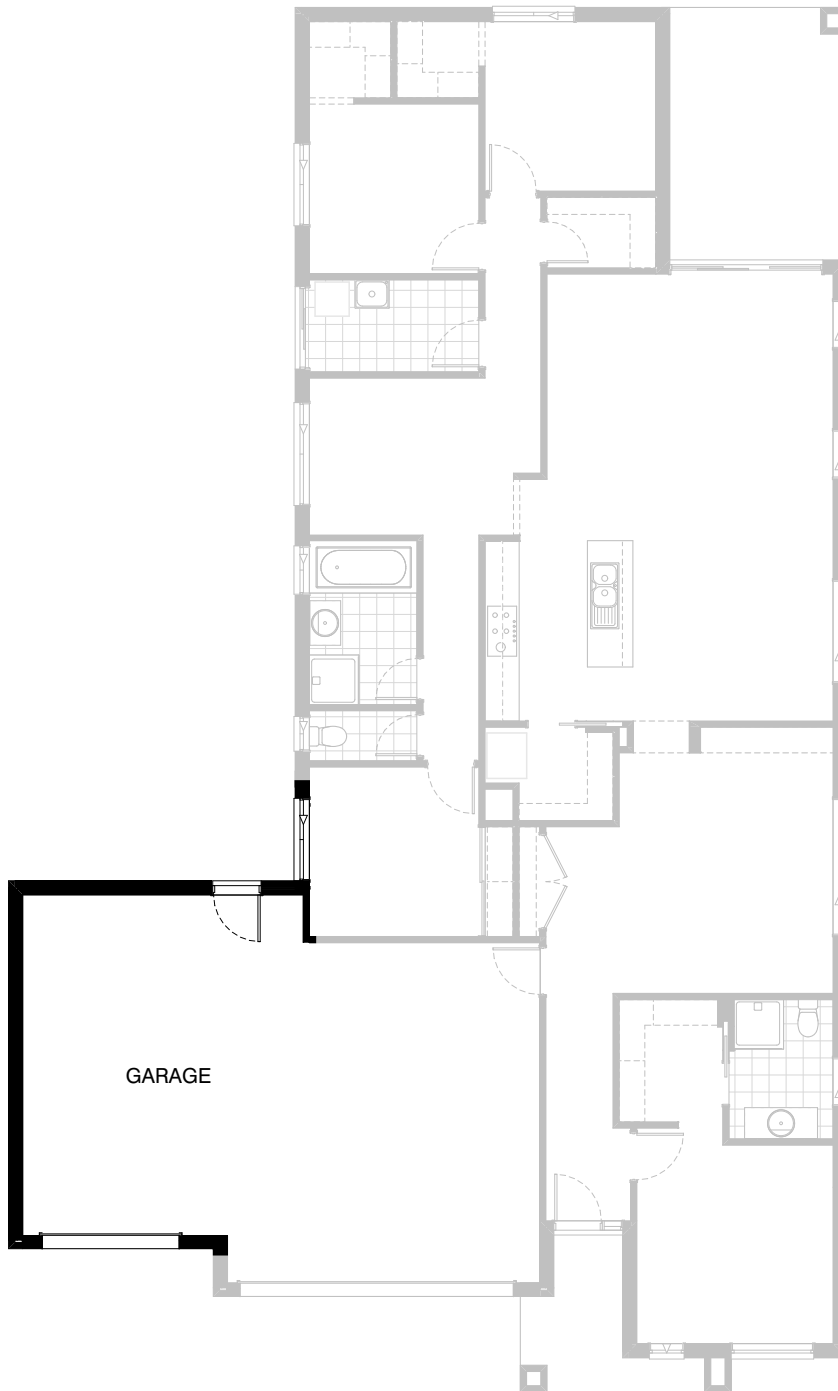
**4**



**2**



**2**



**Option G-3**

Provide triple car garage including additional garage door as per colour selection.  
Increases area by 24.50m<sup>2</sup>.  
Increases width by 3600mm.